

# PHILCO RADIO MODEL 49-607

(Supplement to Service Manual PR-1583, for Model 49-605)

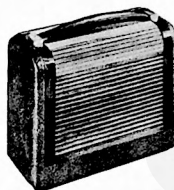
Philco Model 49-607 is a 6-tube, portable superheterodyne, operating on a self-contained battery or a standard power source of a.c. or d.c. High sensitivity, selectivity, and power output are outstanding features. The frequency range is 540 to 1620 kc. The built-in loop aerial provides adequate signal pickup in most localities. Under adverse conditions, an external aerial may be connected to the blue lead. No ground connection should be used.

When servicing the Model 49-607, refer to PR-1583, Philco Service Manual for Model 49-605. All replacement parts for the 49-607 are identical to those for the 49-605 with the exceptions listed below.

## REPLACEMENT PARTS LIST

### MISCELLANEOUS

Description	Service Part No.
Bolt, speaker mounting .....	W2022FA3
Cabinet (less scale) .....	10647E
Cabinet back .....	45-6391
Back-catch assembly .....	76-2273
Foot .....	45-6041
Grille, metal, front .....	56-3351-1
Grille, metal, rear .....	56-3208
Handle loop .....	56-3954
Scale, dial .....	27-5891
Scale strap .....	56-3846
Cable, battery .....	41-3712-1
Dial-backing-and-pulley assembly .....	76-2023
Cord, drive (25 ft. spool) .....	45-8760*
Pointer .....	76-2470
Pulley-and-bracket assembly .....	76-2027
Handle .....	54-7557-1



### SPECIFICATIONS

CABINET .....	Fabrikoid finish, wood trim
CIRCUIT .....	6-tube superheterodyne
FREQUENCY RANGE .....	540—1620 kc.
AUDIO OUTPUT .....	160 milliwatts
OPERATING VOLTAGES .....	Battery pack: "B", 90 volts; "A", 9 volts. A.c./ d.c.: 105—120 volts
POWER CONSUMPTION .....	Battery: "B", 12 ma. at 90 volts; "A", 50 ma. at 9 volts. A.c./d.c.: 25 watts
AERIAL .....	Built-in semi-high-impedance loop; also connector for external aerial
INTERMEDIATE FREQUENCY .....	265 kc.
PHILCO TUBES (6) .....	1T4, r-f ampl.; 1R5, con- verter; 1T4, i-f ampl.; 1U5, det.-a.v.c.-1st a.f.; 3LF4, output ampl.; 117Z3, rectifier
BATTERY TYPE .....	Philco pack type P-841A TP-1584

Description	Service Part No.
Spring, drive cord .....	28-8954
Knob .....	54-4214
Shaft and pulley .....	76-2028
Socket, Loktal .....	27-6138
Socket, miniature .....	27-6203
Switch-plunger assembly .....	76-3061